



Wide area lighting system HPL 450W



Item no. 861033

Item no. 861034



Wide area lighting system HPL 900W



Item no. 861002



Technical Data

Operating voltage:	100 - 240VAC
LED power:	450W
System performance:	460W
LED efficiency:	146lm/W
Incide of CRI:	Ra > 70
Operating life:	L80/B50 > 97'000h
LED switching capability:	> 1 mil
Protection category:	IP66
Impact resistance:	IK10
Protection class:	I
MacAdam:	3-step
Dimmable:	Yes
Operating range of temperature:	-20°C to +50°C
Integrated thermal management:	Yes
Max. surface temperature:	+90°C (suitable for use in industrial premises with fire hazards), D rating label
Weight:	19.2kg
Dimensions l × h* × w:	390 × 685 × 240mm
Material housing:	Aluminium
Housing colour:	black
Swivel angle of bracket:	270°

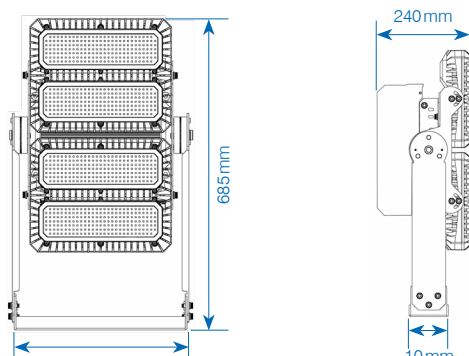
*h = with bracket folded downwards

Technical Data

Operating voltage:	100 - 240VAC
LED power:	900W
System performance:	920W
LED efficiency:	146lm/W
Incide of CRI:	Ra > 70
Operating life:	L80/B50 > 97'000h
LED switching capability:	> 1 mil
Protection category:	IP66
Impact resistance:	IK10
Protection class:	I
MacAdam:	3-step
Dimmable:	Yes
Operating range of temperature:	-20°C to +50°C
Integrated thermal management:	Yes
Max. surface temperature:	+90°C (suitable for use in industrial premises with fire hazards), D rating label
Weight:	33.3kg
Dimensions l × h* × w:	700 × 685 × 240mm
Material housing:	Aluminium
Housing colour:	black
Swivel angle of bracket:	270°

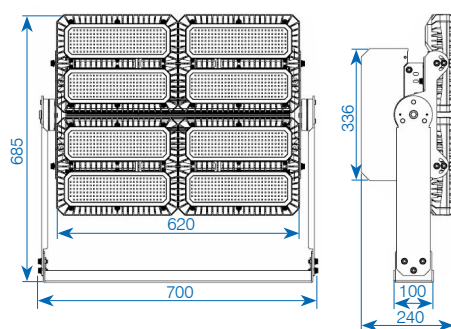
*h = with bracket folded downwards

Dimensions



Item no.	Designation
✓ 861033	Wide area lighting system HPL 450W, 230VAC, 110°, 5'700K, 57'000lm, IP66, DALI
✓ 861034	Wide area lighting system HPL 450W, 230VAC, asymmetrical 130° × 60°, 5'700K, 68'600lm, IP66, DALI

Dimensions



Item no.	Designation
✓ 861002	Wide area lighting system HPL 900W, 230VAC, asymmetrical 130° × 40°, 5'700K, 134'000lm, IP66, DALI

✓ from stock, offer subject to prior sale

Wide area lighting system HPL 1'350 W



Item no. 861004

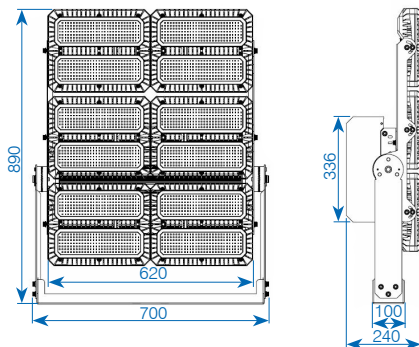


Technical Data

Operating voltage:	100-240 VAC
LED power:	1'350 W
System performance:	1'380 W
LED efficiency:	146 lm/W
Incide of CRI:	Ra > 70
Operating life:	L80/B50 > 97'000 h
LED switching capability:	> 1 mil
Protection category:	IP66
Impact resistance:	IK10
Protection class:	I
MacAdam:	3-step
Dimmable:	Yes
Operating range of temperature:	-20°C to +50°C
Integrated thermal management:	Yes
Max. surface temperature:	+90°C (suitable for use in industrial premises with fire hazards), D rating label
Weight:	42.8 kg
Dimensions l × h × w:	700 × 890 × 240 mm
Material housing :	Aluminium
Housing colour:	black
Swivel angle of bracket:	270°

*h = with bracket folded downwards

Dimensions



Item no.	Designation
✓ 861004	Wide area lighting system HPL 1'350W, 230 VAC, asymmetrical 130°×40°, 5'700K, 197'600lm, IP66, DALI

Product features

Modular LED light with symmetrical or asymmetrical lighting characteristics and Single LED technology. The HPL has a low-profile construction and is black powder-coated. It is provided with a 0.8m feed-in cable with a plug and socket connection for easy assembly.

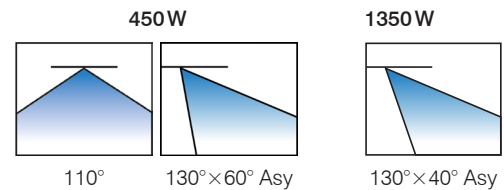
- immediate full luminous flux
- low power consumption at very high light efficiency
- minimal temperatures progression
- high switching capability (> 1 mil)
- large operating temperature range: -20°C to +50°C
- no UV/IR radiation
- insensible against shocks and vibrations

Areas of application

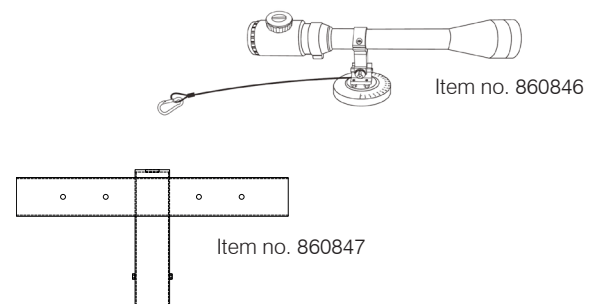
Suitable for all areas which require extensive basic illumination.

- building site
- ski slope
- open spaces
- Industry ...

Available beam angles

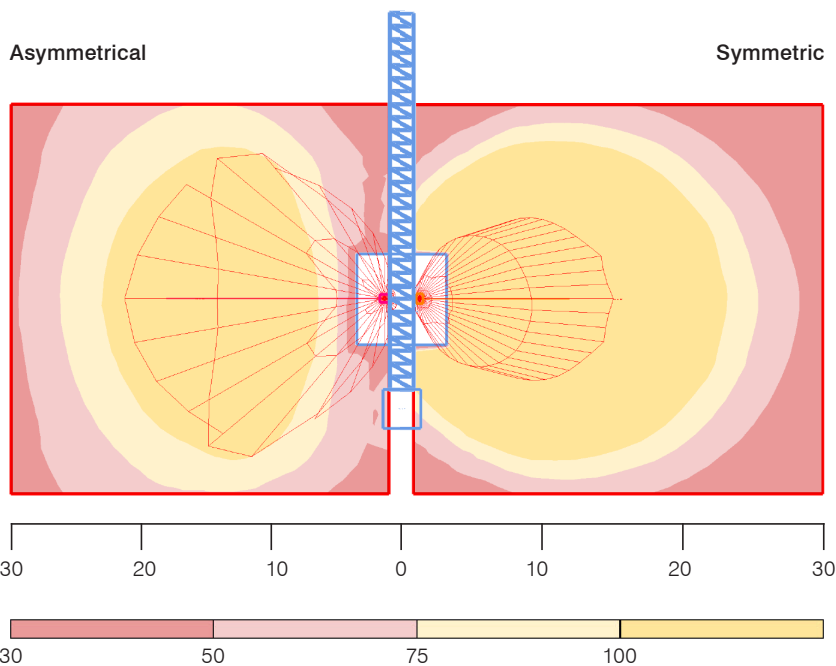


Accessories/spare parts



Item no.	Designation
✓ 860846	Alignment device for HPL LED spotlights
860847	Pole mount bracket for pole with Ø 76 mm for HPL 900W/1350W
224414	Pole mount bracket for pole with Ø 76 mm for HPL 450W

✓ from stock, offer subject to prior sale

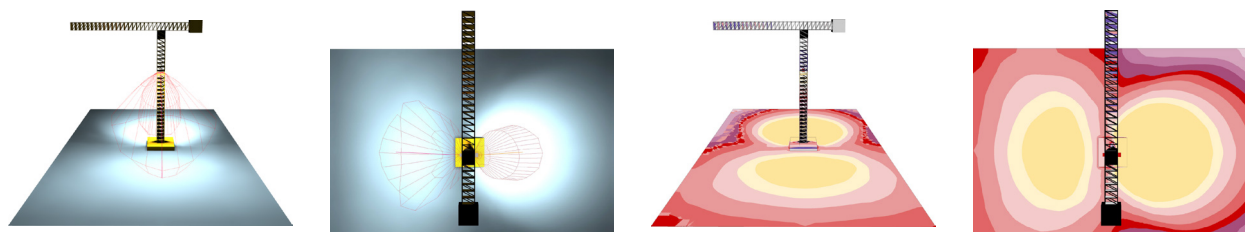


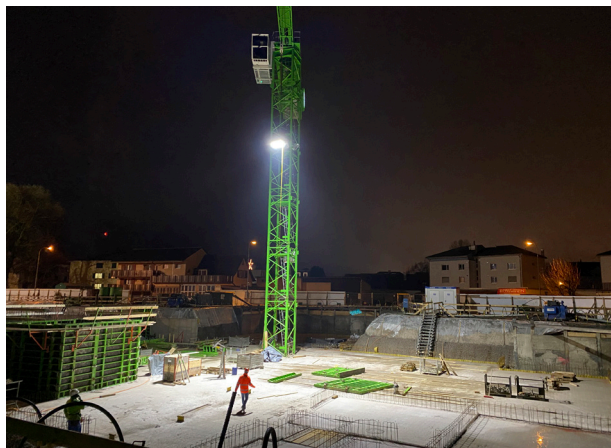
Utilisation height 10 m, HPL 450	Asymmetrical (130x60°)	Symmetric (110°)
Minimal luminance (E _{min})	20 lx	8 lx
Minimum luminance (E _m)	65 lx	51 lx
Maximum luminance (E _{max})	137 lx	124 lx
Overall uniformity U _o (E _{min} /E _m)	0.31	0.06

Utilisation height 15 m, HPL 900	Asymmetrical (130x40°)	Symmetric (60°)*
Minimum luminance (E _{min})	27 lx	8 lx
Average luminance (E _m)	86 lx	104 lx
Maximum Beleuchtungsstärke (E _{max})	176 lx	403 lx
Overall uniformity U _o (E _{min} /E _m)	0.31	0.08

Utilisation height 20 m, HPL 1350	Asymmetrical (130x40°)	Symmetric (60°)*
Minimum luminance (E _{min})	34 lx	18 lx
Average luminance (E _m)	85 lx	123 lx
Maximum luminance (E _{max})	146 lx	353 lx
Overall uniformity U _o (E _{min} /E _m)	0.4	0.14

* Available on request





✓ from stock, offer subject to prior sale

4/4

GIFAS
ELECTRIC

GIFAS-ELECTRIC GmbH
Dietrichstrasse 2
CH-9424 Rheineck
☎ +41 71 886 44 44
☎ +41 71 886 44 49
✉ info@gifas.ch
🌐 www.gifas.ch

V1123 We reserve the right to make technical modifications.

SYSTEMATIC QUALITY